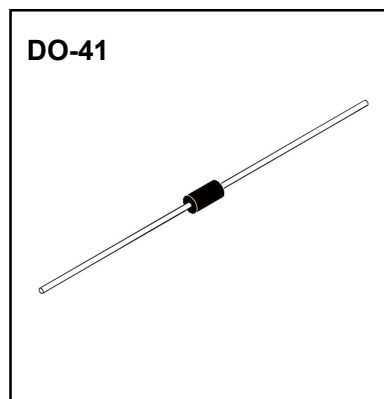


DO-41 Plastic-Encapsulate Diodes

Silicon bidirectional diac

Features

- VBO 28V-36V



Limiting Values (Absolute Maximum Rating)

Symbols	Parameters		Value	Units
PC	Power Dissipation on printed Circuit(L=10mm)	TA=50°C	150	mW
ITRM	Repetitive Peak on-state Current	tp=10us f=100Hz	2.0	A
TSTG/TJ	Storage and Operating Junction Temperature		-40 to+125	°C

Electrical Characteristics (Ta=25°C Unless otherwise specified)

Symbols	Parameters	Test Condition	Value		Units
			Min	Max	
VBO	Break Voltage(Note 2)	C=22Nf(Note2) See diagram1	Min	28	V
			Typ	32	
			Max	36	
I+VBOI- I-VBOI	Breakover Voltage Symmetry	C=22Nf(Note2) See diagram1	Max	3	V
I±ΔVI	Dynamic Breakover Voltage(Note1)	ΔI=(IBO to IF=10Ma) See diagram1	Min	5	V
VO	Output Voltage (Note1)	See diagram2	Min	5	V
IBO	Breakover Current (Note1)	C=22Nf(Note2)	Max	100	uA
Tr	Rise Time(Note1)	See diagram3	Typ	1.5	uS
IB	Leakage Current(Note1)	VB=0.5 VBO max See diagram1	Max	10	uA

Typical Characteristics

DIAGRAM 1: Current-voltage characteristics

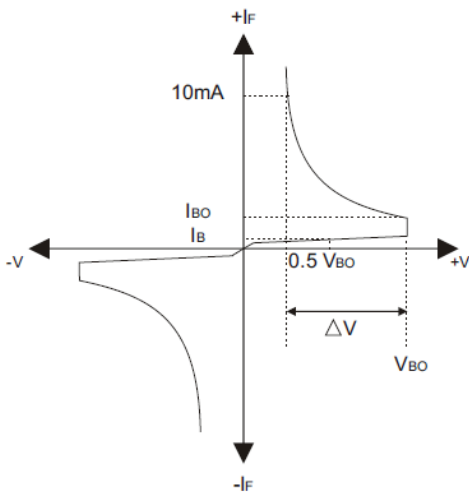


FIG.1-Power dissipation versus ambient temperature (maximum values)

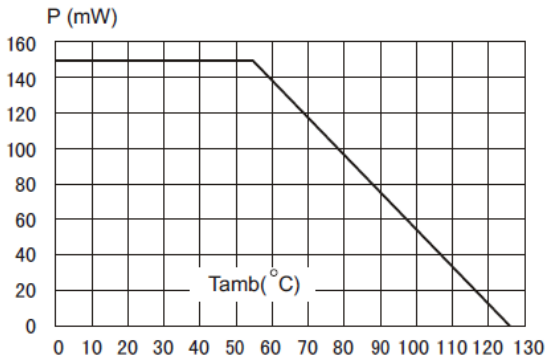


FIG.3-Peak pulse current versus pulse duration (maximum values)

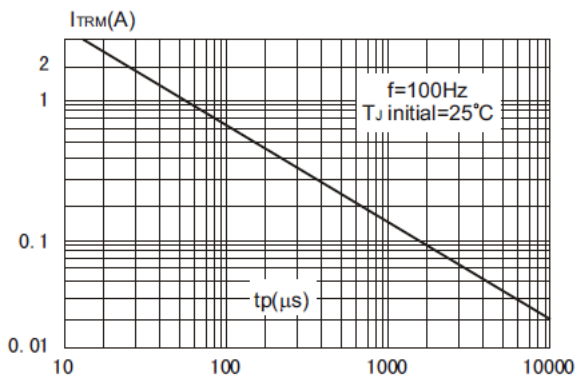


DIAGRAM 2: Test circuit for output voltage

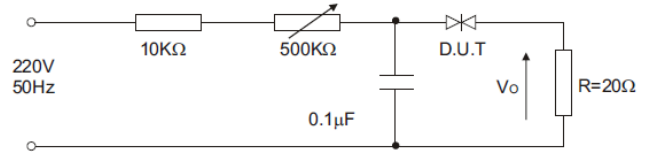


DIAGRAM 3: Test circuit see diagram2 adjust R for I_P=0.5A

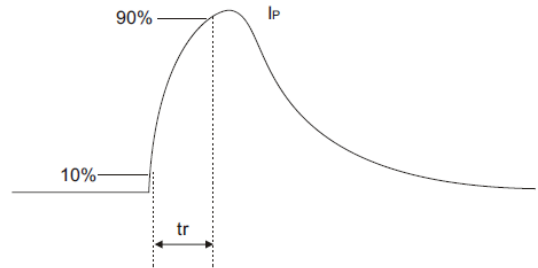
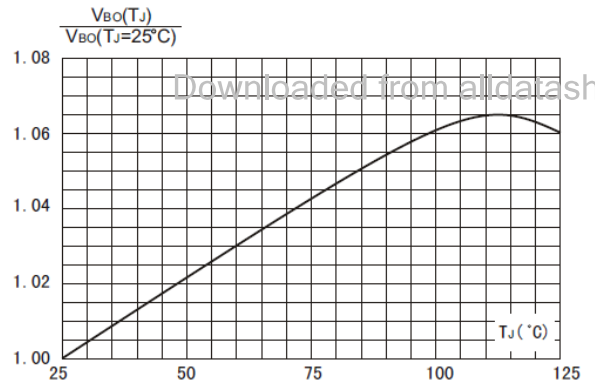
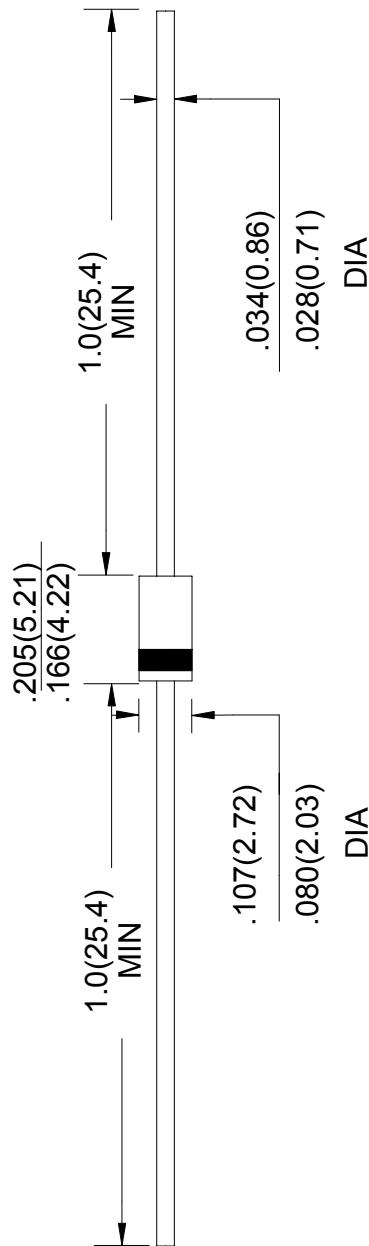


FIG.2-Relative variation of VBO versus junction temperature (typical values)





Downloaded from alldatasheet.com

Unit: in inches (millimeters)

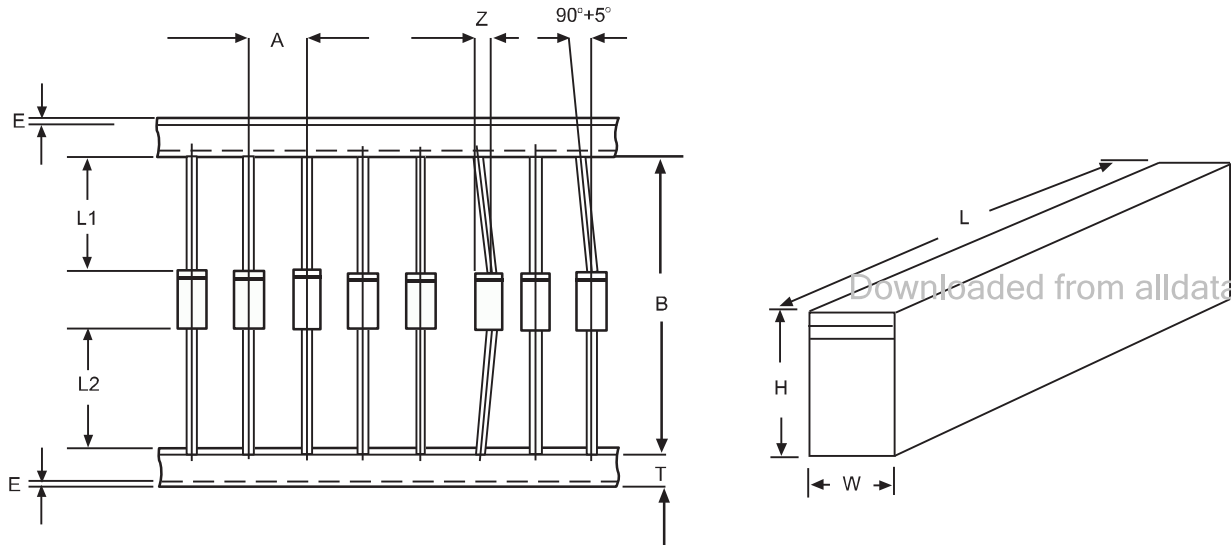
NOTICE

JSKD reserve the right to make modifications, enhancements, improvements, corrections or other changes without further notice to any product herein. JSKD does not assume any liability arising out of the application or use of any product described herein.

Ammo Box Packaging Specifications For Axial Lead Rectifiers

Axial lead devices are packed in accordance with EIA standard RS-296-D and specifications given below

COMPONENT OUTLINE	COMPONENT PITCH A	INNER TAPE PITCH B	CUMULATIVE PITCH TOLERANCE
	$\pm 0.5\text{mm}(.020'')$	$+0.5\text{mm}(.020'')$	
R-1	5.0mm	26.0mm	2.0mm/20pitch
R-1	5.0mm	52.4mm	2.0mm/10pitch
A-405	5.0mm	26.0mm	2.0mm/20pitch
A-405	5.0mm	52.4mm	2.0mm/10pitch
DO-34/DO-35	5.0mm	26.0mm	2.0mm/20pitch
DO-34/DO-35	5.0mm	52.4mm	2.0mm/10pitch
DO-41	5.0mm	26.0mm	2.0mm/20pitch
DO-41	5.0mm	52.4mm	2.0mm/10pitch
DO-15	5.0mm	52.4mm	2.0mm/10pitch
DO-27	10.0mm	52.4mm	2.0mm/10pitch
R-6	10.0mm	52.4mm	2.0mm/10pitch



ITEM	SYMBOL	SPECIFICATIONS(mm)	SPECIFICATIONS(inch)
Component alignment	Z	1.2max	0.048max
Tape width	T	6.0 ± 0.4	0.236 ± 0.016
Exposed adhesive	E	0.8max	0.032max
Body eccentricity	$ L1-L2 $	1.0max	0.040max
Box length	L	255.0 ± 5.0	10.04 ± 0.197
Box width	W	78.0 ± 5.0	3.07 ± 0.197
Box height	H	150.0 ± 5.0	5.91 ± 0.197

NOTE: Each component lead shall be sandwiched between tapes for A minimum of 3.2mm(0.126'')